



Ph. - (03484) 271350

(M) - 919475681450

Fax - 03484 - 271350

email - panchthupi.phgc.@gmail.com

PANCHTHUPI HARIPADA-GOURIBALA COLLEGE

(ESTD. - 1996)

P.O. - PANCHTHUPI □ DIST. - MURSHIDABAD

PIN - 742161

Ref.

Date

Feedback Analysis Report (Faculty Member)



**From the Academic Year 17-18
To the Academic Year 21-22**

Year wise faculty strength (all are taken as sample)

Year	Total No	No of Associate and Assistant Professor including Principal	No of Part time / Guest / SACT Teacher
17-18	28	08	20
18-19	30	08	22
19-20	26	09	17
20-21	26	09	17
21-22	26	09	17

The table reflects a downwardness in the number of total faculty strength. It is due to

1. The department of Arabic had to be closed for not getting students.
2. Introduction of SACT designated teachers increased the teaching hours.

Soma Mukhopadhyay 1.6.2023
Principal
Panchthupi Haripada Gouribala College
Panchthupi, Murshidabad

1

Milis Kumar Mandal 1.6.2023
IQAC COORDINATOR
Panchthupi Haripada Gouribala College
VIII+P.O.- Panchthupi, Dist.-Murshidabad



Ph. - (03484) 271350

(M) - 919475681450

Fax - 03484 - 271350

email - panchthupi.phgc.@gmail.com

PANCHTHUPI HARIPADA-GOURIBALA COLLEGE

(ESTD. - 1996)

P.O. - PANCHTHUPI □ DIST. - MURSHIDABAD

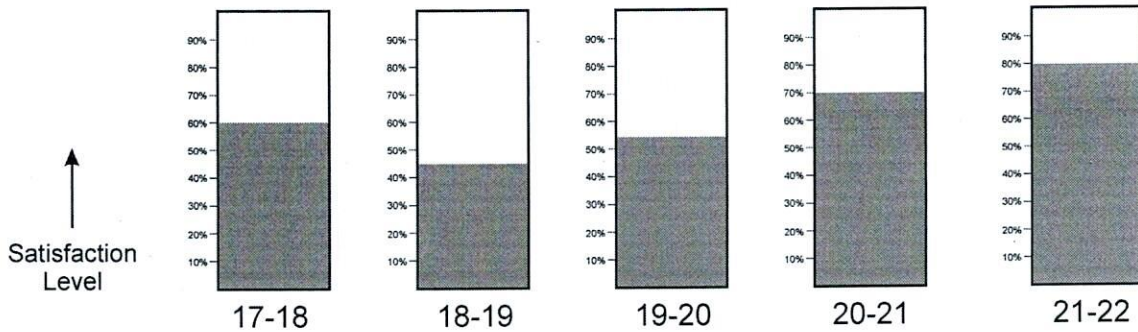
PIN - 742161

Ref.

Date

A. Evolution of the concerned department

(Factors Considered : Result, Class Operation, internal co-operation)



The main cause of ups and downs are based on the results. 18-19 session result was not satisfactory. College started various remedial classes. Later Online Exams effects positive in result sheet.

Soma Mukhopadhyay
 Principal
 Panchthupi Haripada Gouribala College
 Panchthupi, Murshidabad
 16.2023

Milvi Kumar Mondal
 IQAC COORDINATOR
 Panchthupi Haripada Gouribala College
 VIII+P.O.- Panchthupi, Dist.-Murshidabad
 1.6.2023



Ph. - (03484) 271350

(M) - 919475681450

Fax - 03484 - 271350

email - panchthupi.phgc.@gmail.com

PANCHTHUPI HARIPADA-GOURIBALA COLLEGE

(ESTD. - 1996)

P.O. - PANCHTHUPI □ DIST. - MURSHIDABAD

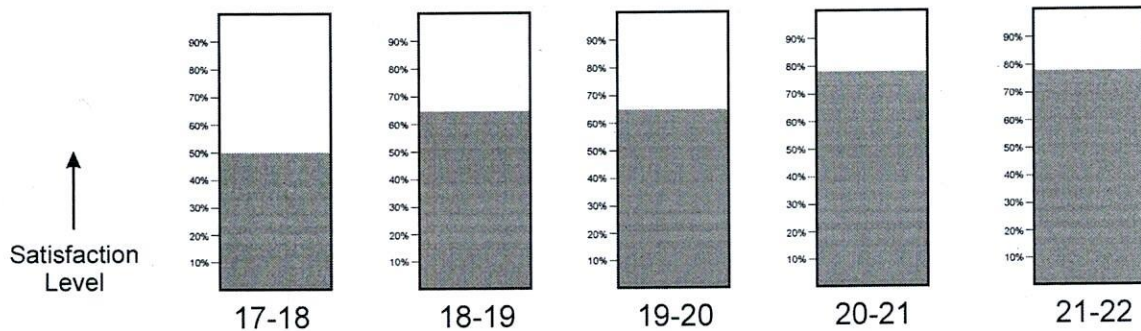
PIN - 742161

Ref.

Date

B. Evolution of the human resource :

(Factors Considered: Personal - Administrative - Work Place Environment).



A clear positive move in this regarding. As the number of part-time and guest teachers is more than twice of full time professors and they had many general issues in early, the first two column reflects lower. In time achieving new SACT designation upraised the columns. Continuous promotion proceedings of professors are also a key factor.

Soma Mukhopadhyay
 1.6.2023
 Principal
 Panchthupi Haripada Gouribala College
 Panchthupi, Murshidabad

Mihir Kumar Mandal
 1.6.2023
 IQAC COORDINATOR
 Panchthupi Haripada Gouribala College
 Vill+P.O.- Panchthupi, Dist.-Murshidabad



Ph. - (03484) 271350

(M) - 919475681450

Fax - 03484 - 271350

email - panchthupi.phgc.@gmail.com

PANCHTHUPI HARIPADA-GOURIBALA COLLEGE

(ESTD. - 1996)

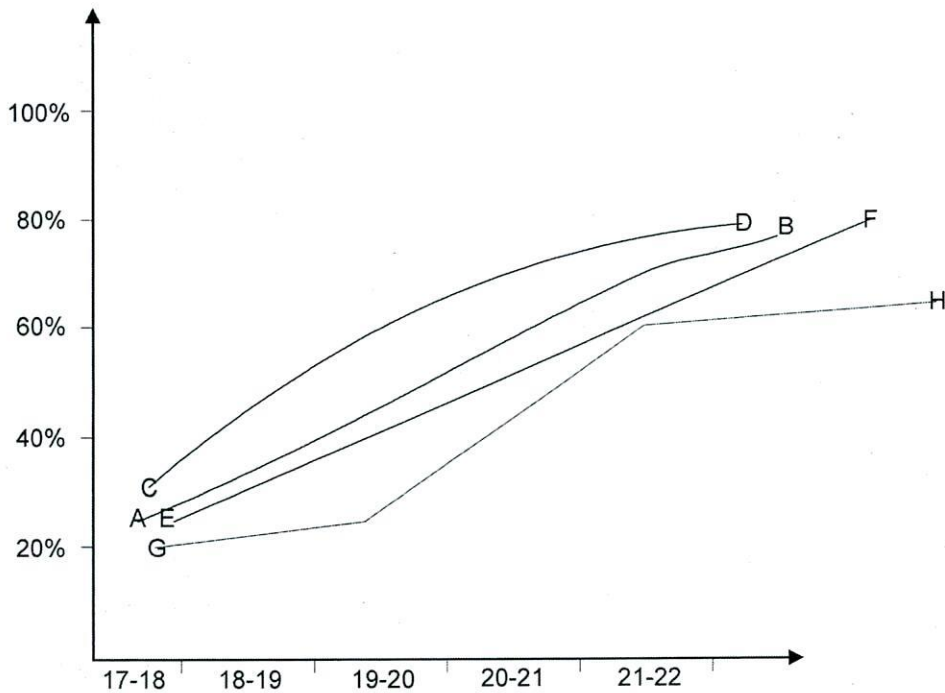
P.O. - PANCHTHUPI □ DIST. - MURSHIDABAD

PIN - 742161

Ref.

Date

C. Satisfaction curves of infrastructure development.



1. Sefty (Boundary wall and C.C.T.V.)

Line A-B

2. Additional Class Room

Line C-D

3. High Speed Internet

Line E-F

4. Library Facility.

Line G-H

All the table and grafs are not mathematically scaled

Soma Mukhopadhyay
 Principal
 Panchthupi Haripada Gouribala College
 Panchthupi, Murshidabad
 1.6.2023

Mihir Kumar Mondal
 IQAC COORDINATOR
 Panchthupi Haripada Gouribala College
 Vill+P.O.- Panchthupi, Dist.-Murshidabad
 1.6.2023